

adatatribe

your turnkey cloud solution partner

CONTACTS

Managing Director:

Tahir Shahid

Email:

info@adatatribe.com

Tel:

+353 851720885

Website:

<https://www.adatatribe.com/>



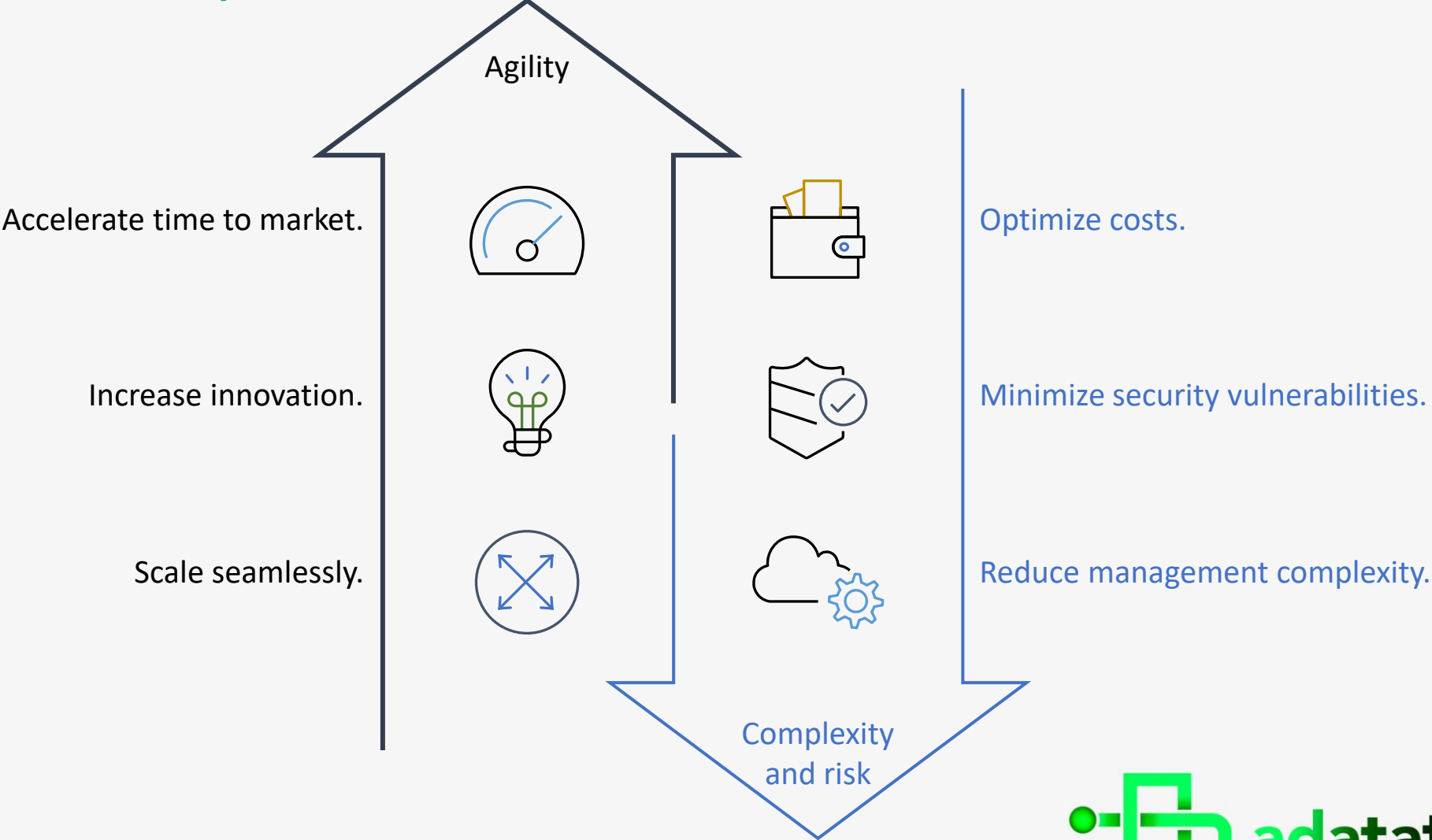
MISSION STATEMENT

We aspire to become your trusted IT Partner by:

1. Abstracting the whole of IT by providing a local Single point of Contact
2. We will be taking responsibility of the entire IT infrastructure
3. Taking care of the complexity of the modern IT infrastructure
4. Guaranteeing fit for purpose fully customised solutions by remaining vendors agnostic



Why customers move to a Data Tribe?





A Data Tribe service categories



Networking
and content
delivery



Database



Security
identity
and compliance



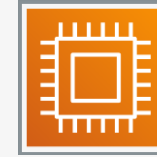
Management
and
governance



Storage



Cost
management



Compute



Containers



Analytics



Customer
enablement



Developer
tools



Customer
engagement



Internet of
Things (IoT)



Application
integration



Migration
and transfer



Machine
learning



Media
services



Blockchain

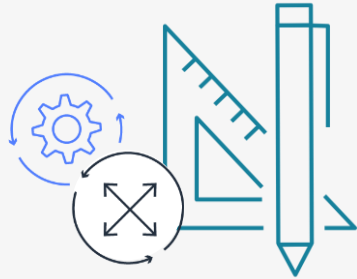


End user
computing





A Data Tribe Architect responsibilities



Plan

- Set technical cloud strategy with business leads
- Analyze solutions for business needs and requirements



Research

- Investigate cloud services specs and workload requirements
- Review existing workload architectures
- Design prototype solutions

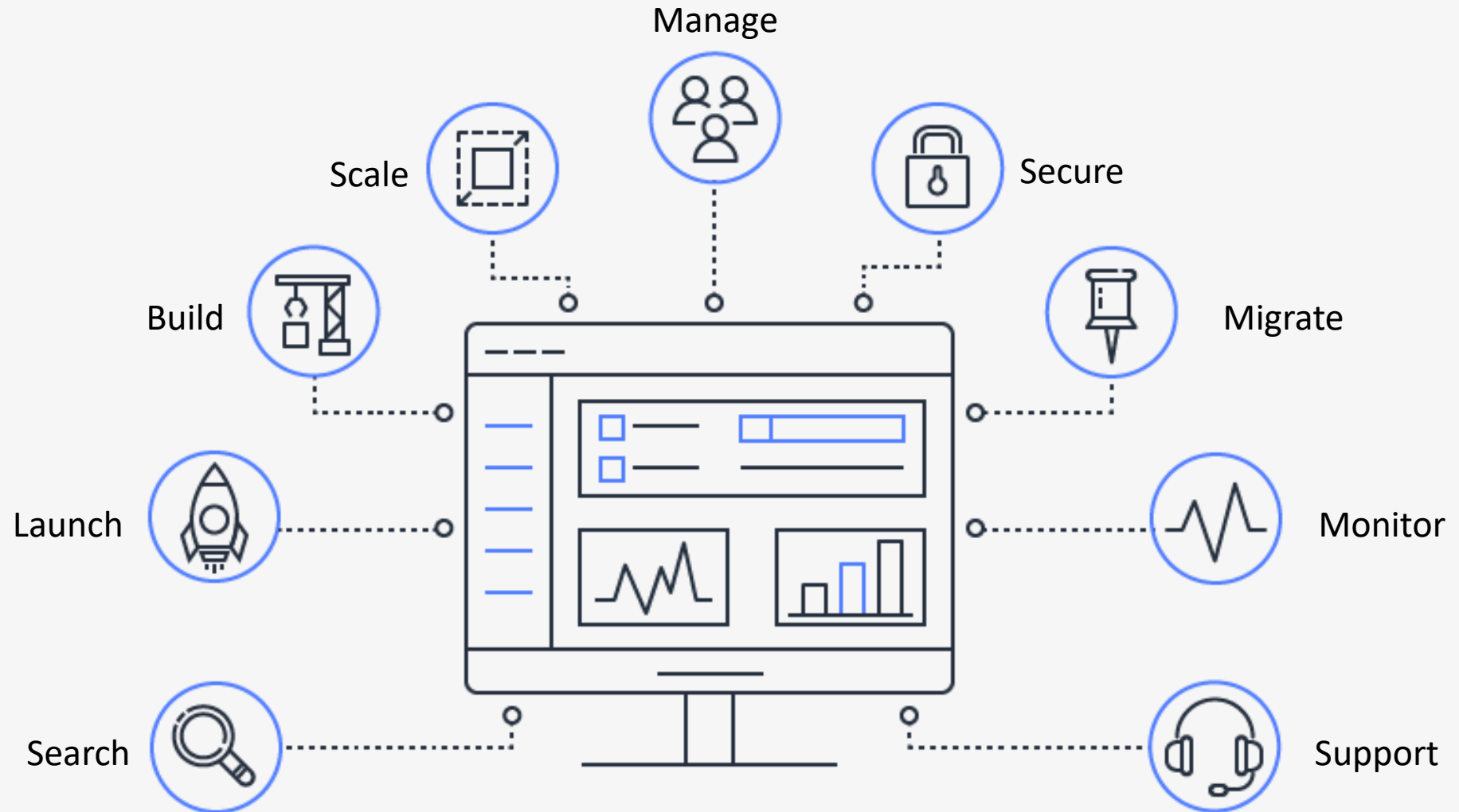


Build

- Design the transformation roadmap with milestones, work streams, and owners
- Manage the adoption and migration



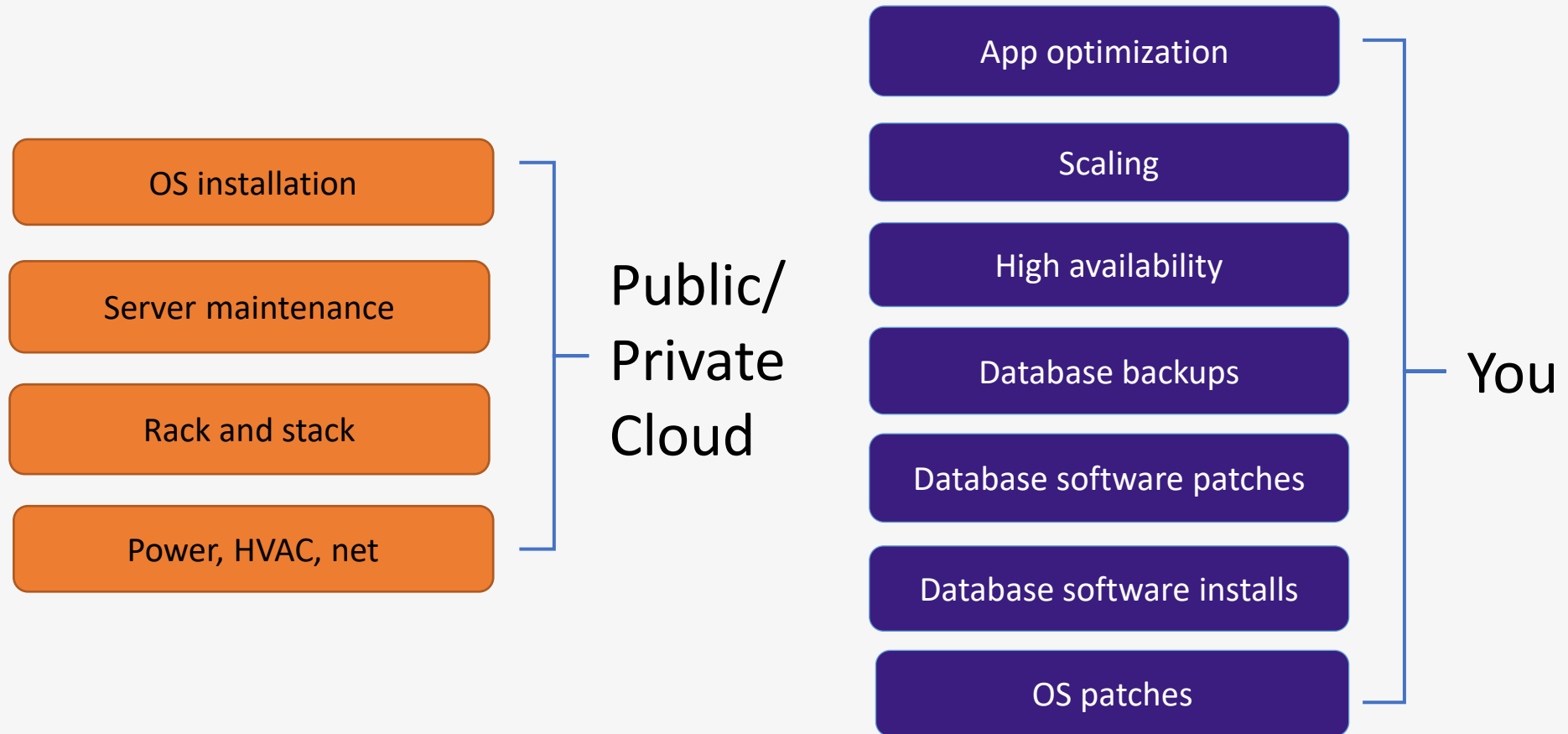
a Data Tribe Responsibility





Unmanaged Services

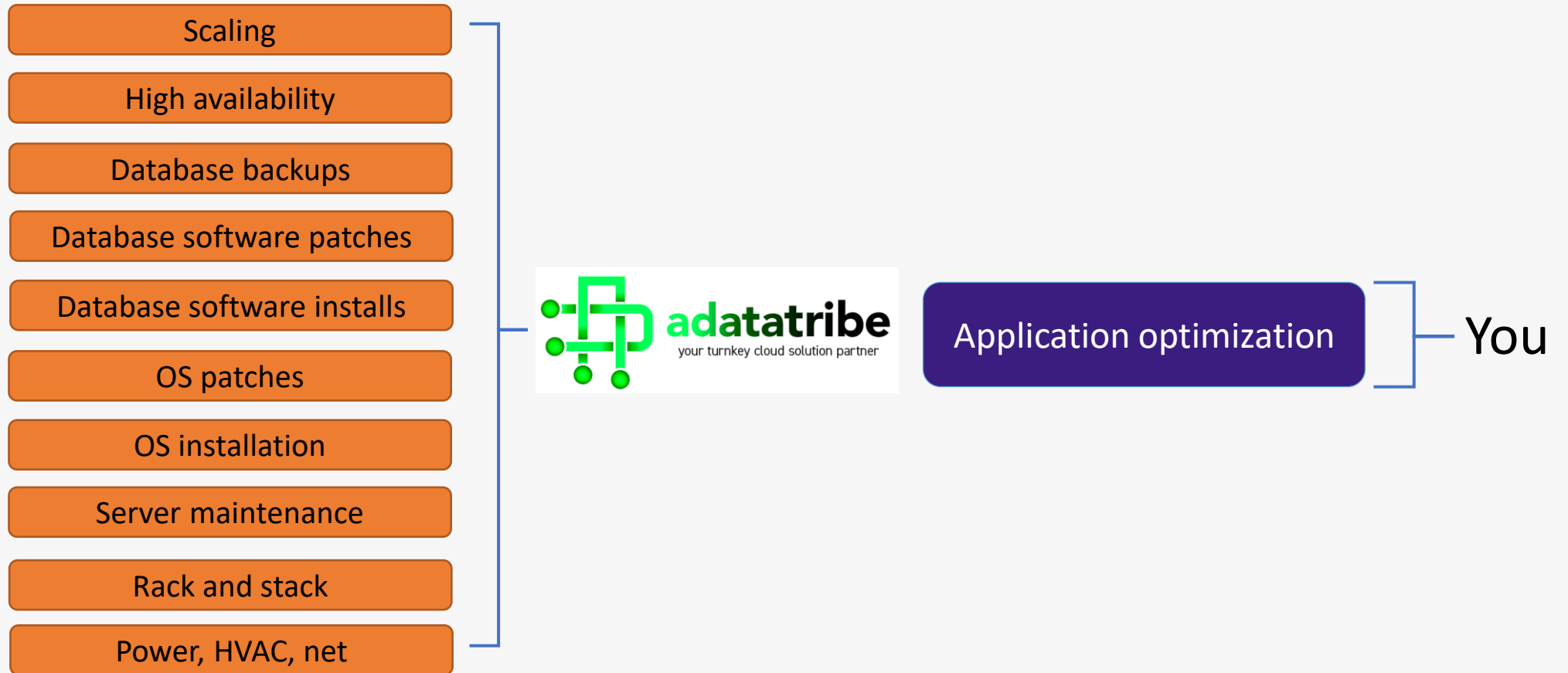
(Traditional approach)





a Data Tribe Managed Service

(Cloud Operating Model)





a Data Tribe Architecture pillars



Security

- Apply at all layers
- Principle of least privilege
- Multi-factor authentication (MFA)



Cost optimization

- Analyze and attribute expenditures
- Cost-effective resources
- Stop guessing



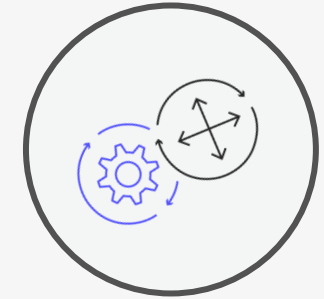
Reliability

- Recover from failure
- Test recovery procedures
- Scale to increase availability



Performance efficiency

- Reduce latency
- Use best of class architecture
- Incorporate monitoring



Operational excellence

- Perform operations with code
- Test response for unexpected events



CONSULTING SERVICES





Consulting Services – Long Term





Data Center Related Services



Full analysis of current data center high availability, operational recovery, cyber recovery, disaster recovery, and business continuity. Provide detailed best practices and implementation roadmap to optimize resiliency.

**DATA CENTER
RESILIENCY**



A service to improve and optimize IT infrastructure employing technologies that meet organization vision. Detailed analysis outlining action plans and industry proven engineering solutions that are aimed to enhance data center agility and scalability

**DATA CENTER
TRANSFORMATION**



Thorough analysis of the existing data center and targeted future state providing full hardware and software implementation steps, migration plan, risk mitigation, and runbooks.

**DATA CENTER
MIGRATION**



An engagement that provides full data center strategy detailing priorities, challenges and gaps to align IT department with the business objectives and organization vision and mission.

**DATA CENTER
STRATEGY**



Database Related Services



An accelerated and methodological workshop to evaluate Oracle environment optimal performance, best practice compliance, and industry guidelines implementation. Full database observations and optimization recommendations.

**DATABASE
OPTIMIZATION**



Application classification is a service that defines business importance and criticality identifying resiliency gaps in infrastructure and data protection. Best practices recommendations and roadmap.

**DATABASE
CONSOLIDATION**



Provide current and future state architecture outlining, future architectural design, optimizing database resources and licensing savings. Full implementation and migration plan.

**DATABASE
REPLATFORMING**



Full dashboard of all Oracle databases in production.. A view of the database environment is generated to identify gaps and build a strategy that meets management objectives.

**DATABASE
PROFILING**



Application Related Services



Full discovery of organization applications landscape providing detailed architecture, map, and interdependencies. Discovery provides current platforms and business functionality. Future state recommendations and enhancement roadmap

APPLICATIONS LANDSCAPE



Application classification is a service that defines business importance and criticality identifying resiliency gaps in infrastructure and data protection. Best practices recommendations and roadmap.

APPLICATIONS CLASSIFICATION



A service that provides recommendation and roadmap to replatform and modernize applications to agile and scalable infrastructure that meets growing and business objectives and requirements.

APPLICATION REPLATFORMING



An assessment of applications identifying gaps to meet organization technology vision and strategy. Detailed recommendations and implementation roadmap and plan.

APPLICATION ASSESSMENT



Business Objectives Related Services



An evaluation of existing or new BC of an Oracle environment to protect data at all levels high availability, logical corruption, disaster recovery and backup recovery. Methodological workshops using proven framework, best practices, regulation compliance and industry

BUSINESS CONTINUITY



An engagement to determine the criticality of business activities and associated resource requirements to ensure operational resilience and continuity of operations during and after a business disruption. RPOs and RTOs are identified for each business operation

BUSINESS IMPACT ANALYSIS



Full servuy of the organization vision, priorities, challenges, and concerns from business point of view. An analysis report providing a full strategy and roadmap to direct the organization to meet its objectives.

DISCOVERY SERVICE



An engagement identifies IT challenges and priorities. An analysis of the discovery findings are compiled to determine strengths, weaknesses and gaps outlining key point initiatives to optimize business strategies and operations.

IT STRATEGY DEVELOPMENT



Consulting Services – Short Term

Short Term

Services

We offer diversified IT consulting services aimed to assist our clients with their business vision and objectives. We work hard to meet your requirements at a cost-effective services performed by highly efficient skilled IT experts.

Our services encompasses IT strategy, development, implementation, and management.

IT Services

Outsourcing

Strategies

Academic & Training

Training

Human Resources



Consulting Services – Short Term

BC Readiness Accelerator

Oracle License Optimization

Application Classification

RAC Health Check

Database Modernization

Database Profiling

DB Optimization Assessment

Consolidation Jump Start

Database Replatforming

Database As A Service

Exadata Benefit Check

Database Profiling



Cyber Resilience





Our Expertise

- 1. STRATEGIC SECURITY CONSULTING**
- 2. SECURITY ASSESSMENT AND COMPLIANCE**
- 3. CYBER TECHNOLOGY EXPERTISE**
- 4. CYBER OPERATIONS AND RESILIENCE**
- 5. INVESTIGATION AND CYBER INCIDENT RESPONSE**



Advisory

- **Cyber Security Road-map**
 - **Security Posture Improvement**
 - **Strategic, Operational plan**
- **Security Assessments**
 - **Penetration Tests**
 - **Web and Mobile App Test**
 - **Red Team**
- **Governance and Compliance**
 - **NIST**
 - **CIS**
 - **ISO**



Technology

- **Security Design and Architecture**
 - Data Center
 - OT/IoT
 - Cloud / Hybrid
- **Deployment and Integration**
 - High-Low Level Design
 - Best practices Delivery Methodologies
- **Support and Maintenance**
 - On-site / Off-site expertise



Vigilance

- **Security Operation Center Design**
- **Security Analysis and Monitoring**
- **Threat Intelligence**



Evidence

- **Incident Response Plan**
- **Threat Hunting**
- **Forensics and Investigations Simulation**



Technology Partners





Global Presence with Localized Languages





NETWORK & SECURITY



Secure LAN/WAN/Wireless

- Provide a secure LAN solution (Design, Implement and Support)
- Expertise in Secure Wireless Solutions
- Secure WAN connectivity, cloud communication (Azure, Amazon, Google etc)



Software Define Networking (SDN/SDWAN)

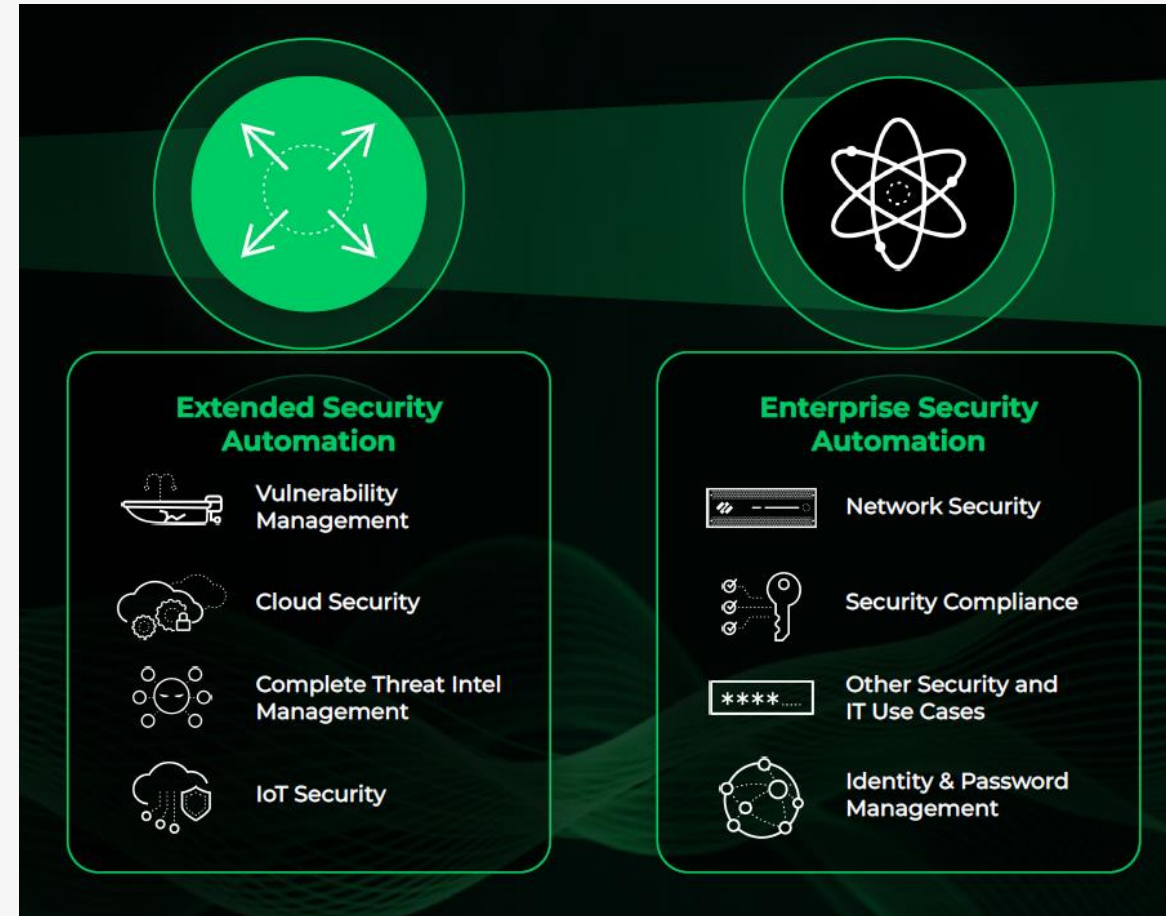
- Software defines Networking Solution
- Provide end to end Network Visibility
- Centralized cloud-based management
- Secure Encrypted SDWAN (VPN) communication between Branch and DC/Cloud





Network Security

- Parameter Firewalls, Cloud firewall solution PaloAlto & Fortinet
- Threat Protection, Vulnerability Management, DD,OS and DNS protection
- End point Protection, Ransomware protection, Secure Remote access
- ZTA (Zero Trust Architecture) secure Network Provisioning and full network visibility
- Centralize Policy implementation and monitoring
- Cortex XDR (Extended Detect and Response)
- SASE (Secure Network Service Edge)



Extended Security Automation



Vulnerability Management



Cloud Security



Complete Threat Intel Management



IoT Security

Enterprise Security Automation



Network Security



Security Compliance



Other Security and IT Use Cases



Identity & Password Management



Network Review and Security Audit

- Network Review Analysis and Troubleshooting
- Security Auditing, Network Assessment, Pen testing
- Secure Access Control Policies review
- Compliance and Data protection
- Network Confidentiality, Integrity, and Availability
- Business Continuity and DR Plan





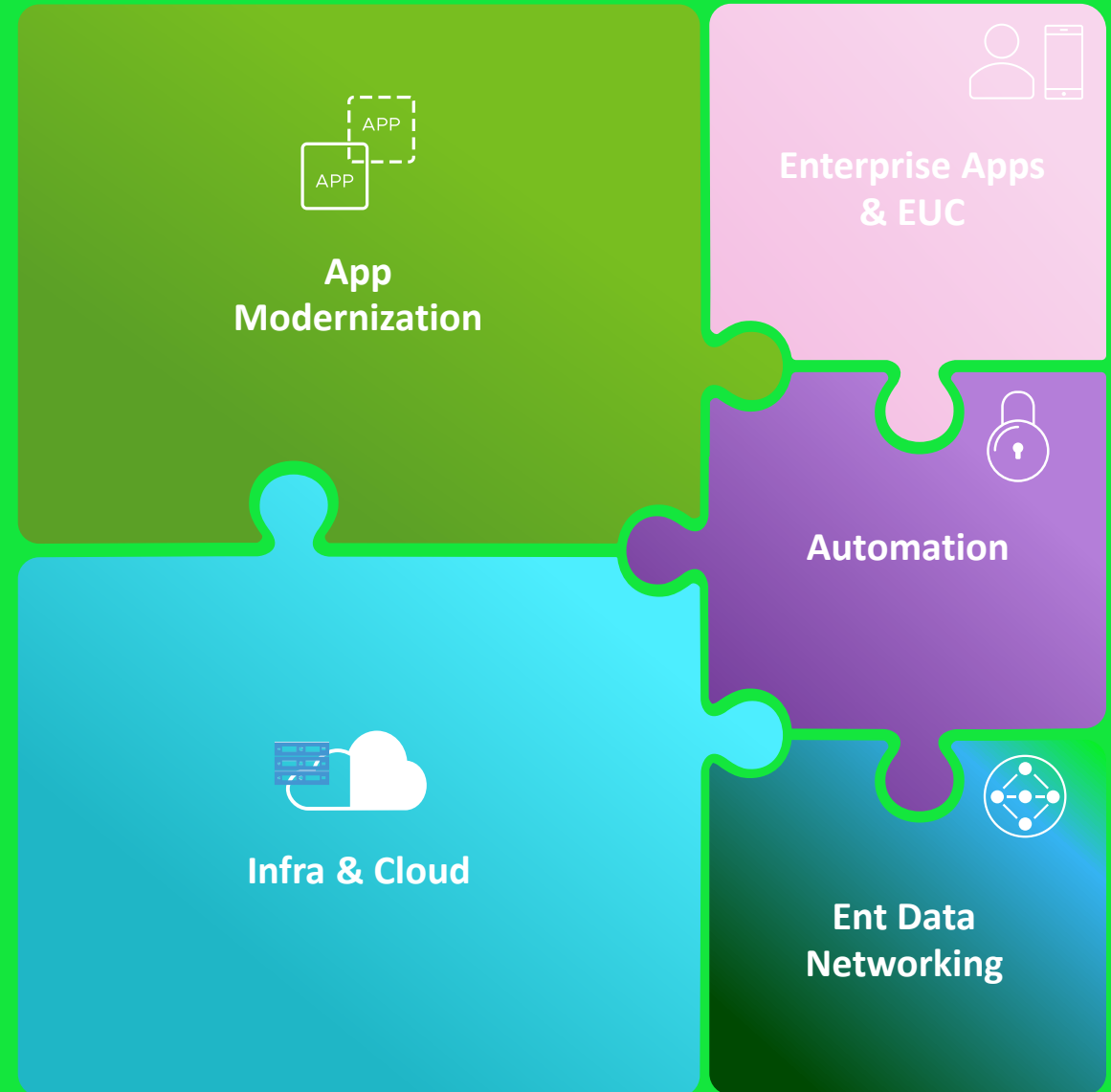
VIRTUALISATION





Strategy and Focus

- Accelerating Digital that helps customers create a technology roadmap & drive an impact on their strategic ambitions





Enterprise Apps & EUC

Services

Cloud Management Layer

Management & Monitoring , Billing, Automation, Orchestration, Pipeline automation.



Central Cloud Management Platform

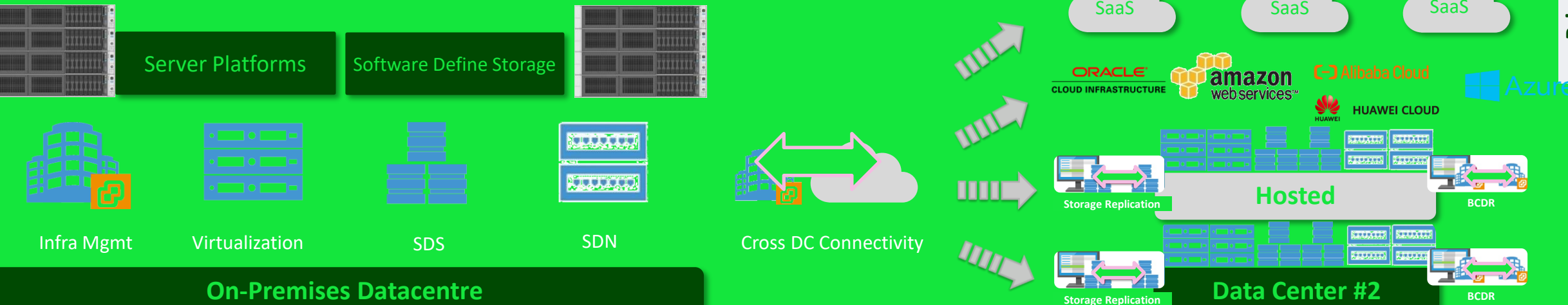
Network & WAN

Modern Applications & DevOps

Emerging Tech

Cloud Layer

Virtualization, Software Define Networking, Multi Cloud Environment, Cloud Migration



On-Premises Datacentre

Data Center #2

Private/Public/Hybrid Cloud
End to End Professional Services.



VMware Expertise

VMware vSphere, vROPS, vRLLI, vRNI

- Deployment & Configuration of Cluster
- HA,DRS,FT,SDRS configurations.
- VM performance Optimization
- VM health check
- Physical to virtual migrations
- VM Encryption configuration
- ESXi & vCenter Upgrade and updates
- Customized dashboard and reports
- 24x7 Monitoring and troubleshooting incase of issues

VMware Tanzu

- Tanzu wavefront & observability configuration
- Configuration of Harbor registry and private chartmeseum repo
- Installation and management of Tanzu CLI
- Migration of Workloads to Tanzu
- Migrate Tanzu Greenplum to AWS
- 24x7 Support and Services

VMware Workspace One

- SaaS and on-prem deployment and configurations
- Android and IOS integrations
- Google play store and Apple integrations
- Application management and pushing to users' devices.
- SEG, UAG VIDM configuration and management

VMware vRealize Automation & Orchestration

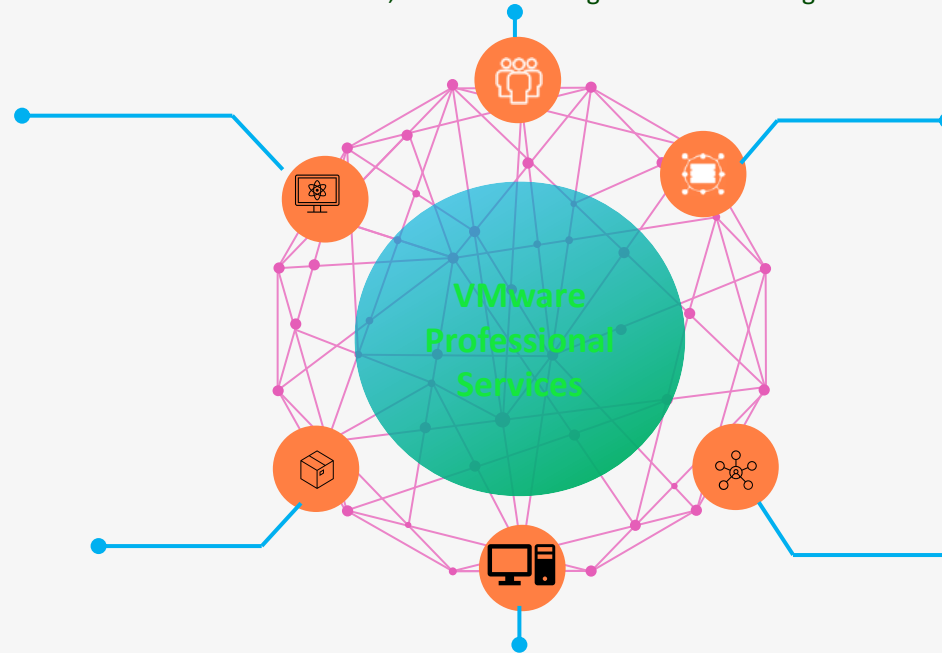
- Deployment and configurations
- Integrations with AWS, vSphere, Azure, NSX
- Customized workflow creation
- Blueprints creations
- 24x7 Support and Services

VMware NSX-T

- Design, Deploy and configuration
- Teir0 and Teir1 configuration
- Micro segmentation of VMs to Application level.
- AVI LB/ Advance LB configurations
- Firewall configuration
- Firewall rules migrations from Physical devices or to NSX-T
- NSX-v to NSX-T migration
- Writing scripts to automate migration configuration & reporting functions.
- 24x7 NSX specialist Support

VMware Horizon

- Terminal Devices Support
- Connection Server, Security Server, App Volume, deployment and configurations
- IAM – Identity and Access Management
- 24x7 L-3 Support and Services



Managed Services– Methodology



Assess

customer's business requirements and capability compared with operations best practices



Manage

measurable, repeatable and continually improved operations/delivery



Design

People, process and technology to deliver business objectives and provide a practice roadmap



Monitor

the customer's capability to provide continual improvements in efficiency and risk coverage



adatatribe

your turnkey cloud solution partner



Infrastructure Project Based Services



**VCP – Datacenter
Virtualization 6 & 7
VTSP & VSP - vSphere**



**VCP -NSX-T
VTSP NSX-T**



**VCP – Horizon
VCP – Workspace one**

**Certified
Resources**



**Certified Kubernetes
Administrator**



**VCP - vRealize Automation
VCP- vRealize Operations**



Terraform associate

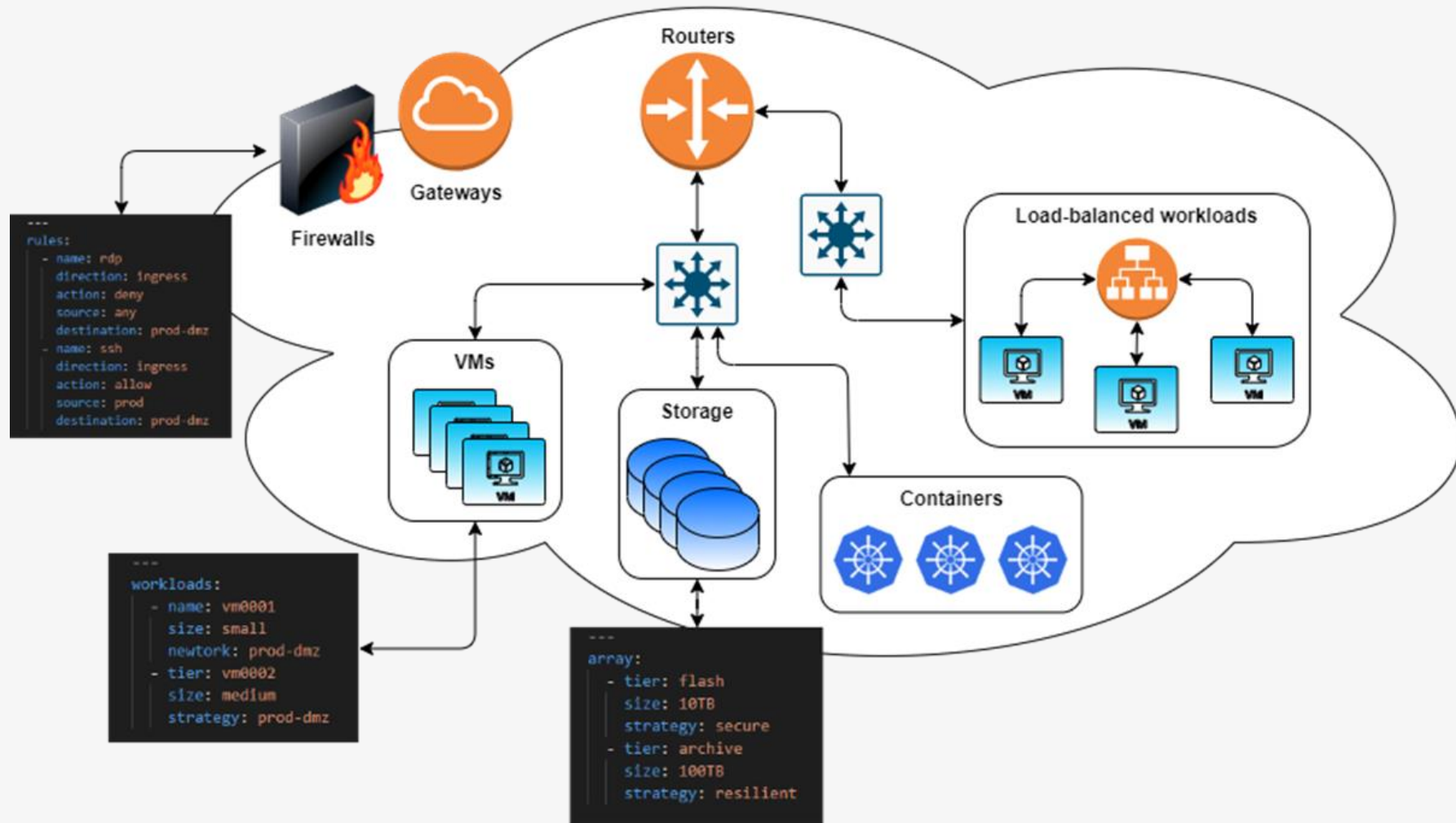


INFRASTRUCTURE AS CODE





Infrastructure as Code





What is IaC?

- Contracts & rulesets
 - Declarative
 - Defined as pseudo-code
 - Software-defined
- Abides by software dev principles
 - SDLC (Dev Lifecycle)
 - Use of SCM (Source Control)
 - Change tracking & version control
 - Promotion management & pipelines
- Prescriptive security
 - Templates & patch automation
 - Dependency and security scans
 - Declarative security rules
- **TLDR; (in a nutshell)**
 - Storing configuration contracts as text files
 - Automating the testing and integrations around those configurations

```
---  
- template: Windows2019_Server  
- hardware:  
  cpu_sockets: 2  
  cpu_cores: 2  
  memory_gb: 16  
  disks:  
    - letter: C  
      label: "OS"  
      size_gb: 120  
      type: "ntfs"  
      tier: gold  
    - letter: D  
      label: "Archives"  
      size_gb: 200  
      type: "ntfs"  
      tier: silver  
  networks:  
    - name: "seg-test-10/24"  
      type: static  
      ip: 10.10.10.136/24
```




Before IaC...

- Fragile software stacks
- Manual deployment
- Undocumented infrastructure
- IT SLAs



Goals

- Consistency
- Idempotence
- Declarative
- NoOps



Benefits

- Deploy continuously
- Dev/production parity
- Short feedback loops

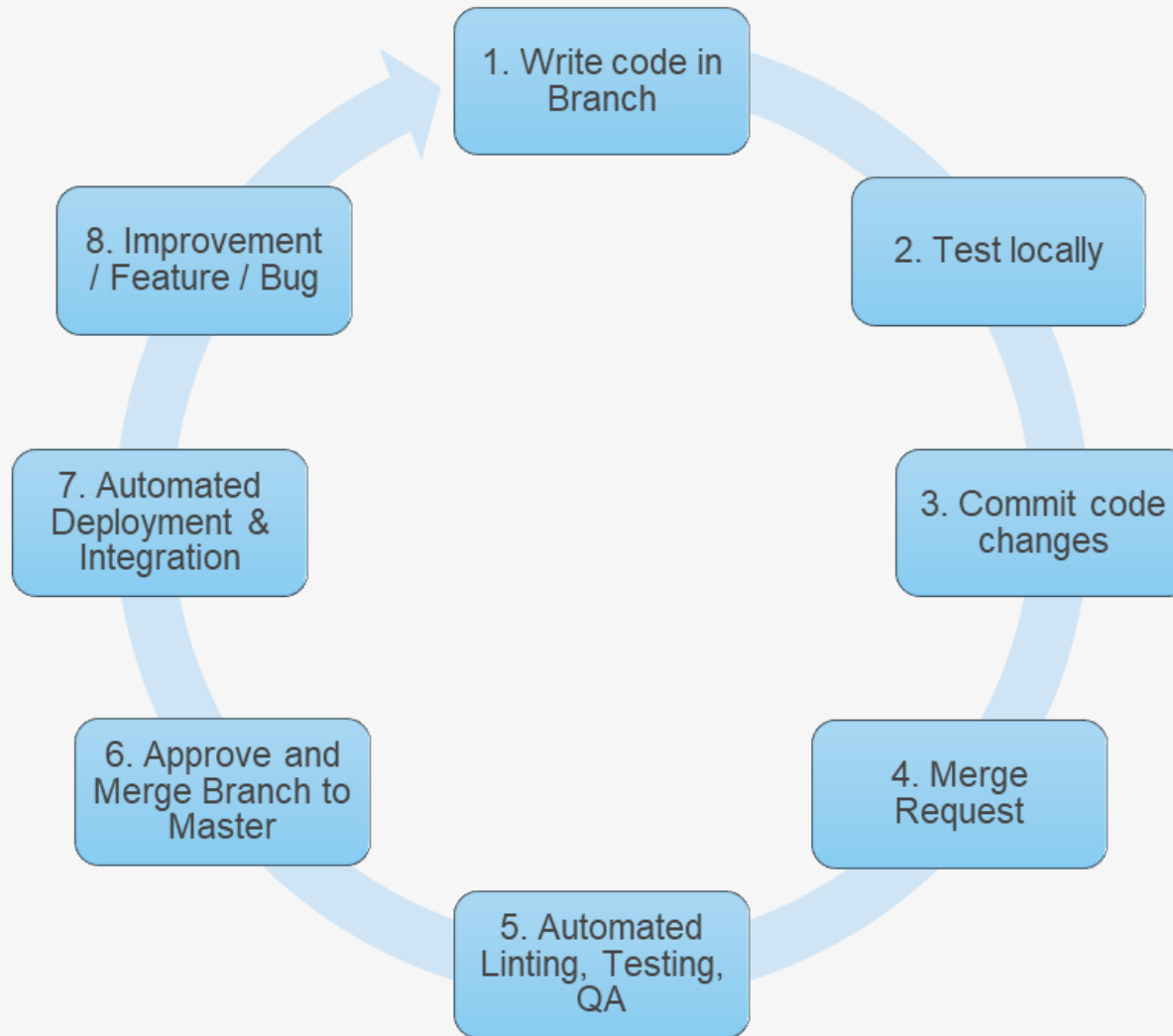


How to do IaC

- Version control everything
- Incremental changes
- Test driven
- Self documenting

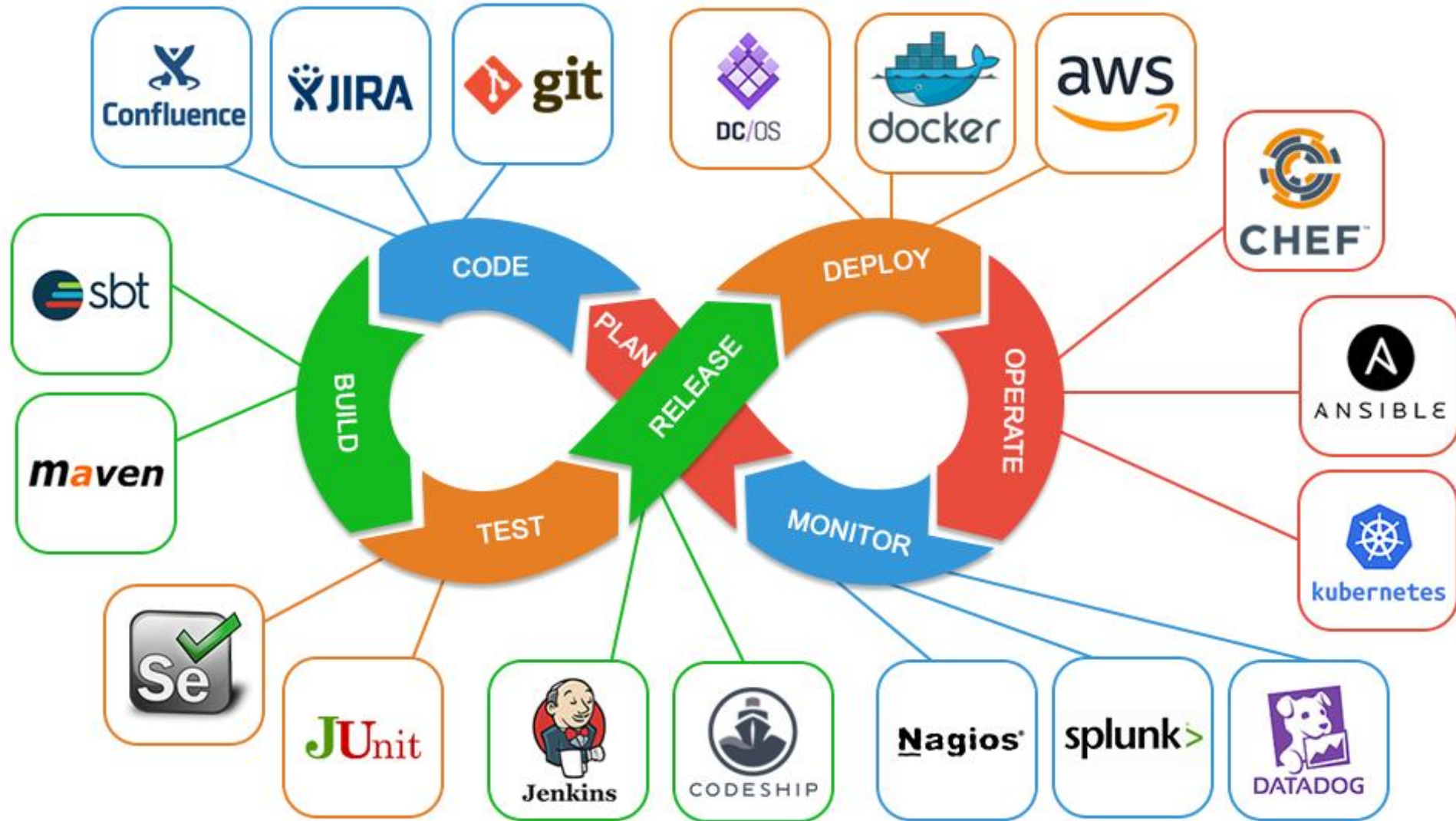


Software Development Lifecycle





DevOps Sample: Flow and Tools





VIDEO PROTECTION





Video Protection System





Why a Data Tribe use your Video Protection System?



Fully configurable and future-proof

XProtect's open platform architecture allows it to be tailored, scaled and updated as your needs develop.



Reliable performance and safety

As well as minimizing downtime and improving ROI, our platform offers peace of mind with GDPR and FIPS 140-2 compliance.



Collaborative and service-minded

Build the best-performing video solutions using the products, services and expertise of Milestone and our global partner network.

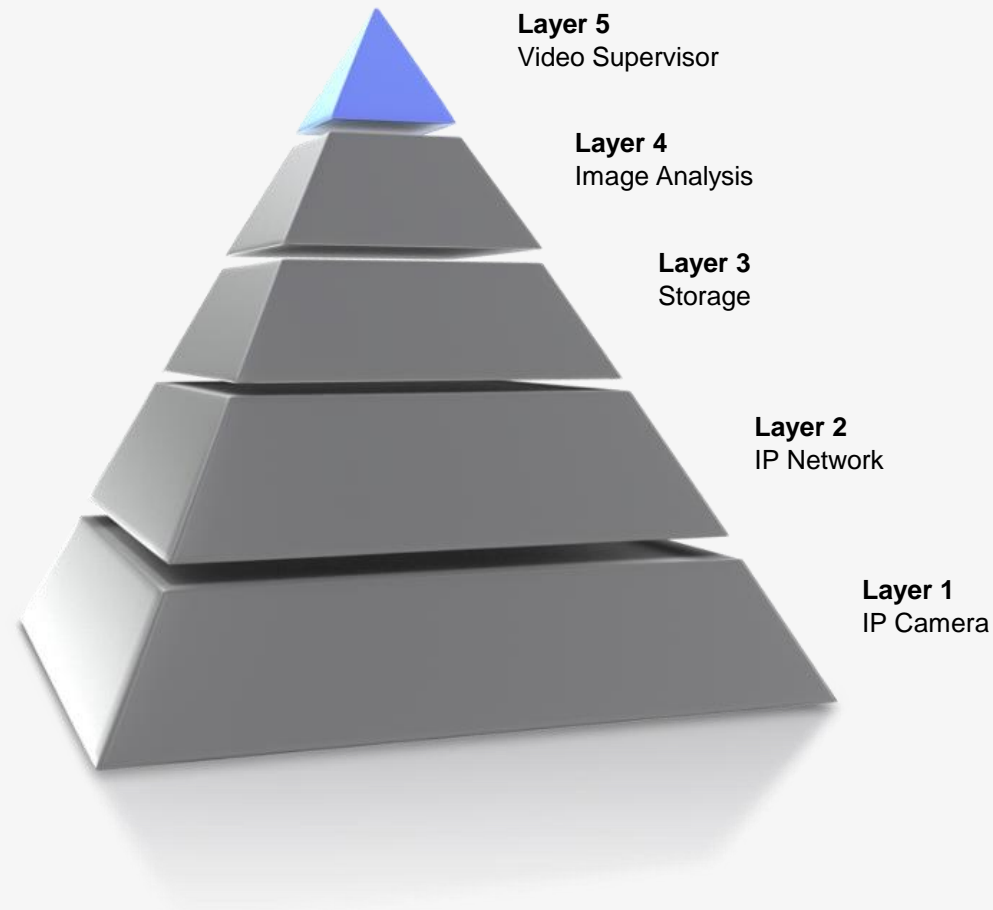


Responsible and people driven

Employ video technology ethically and compliantly while exploring new ways to improve people's safety, happiness and health.



Architecture Pyramid of a Video Protection Project





Network Transport and Bandwidth (1/2)

An essential element of all video protection project is the correct sizing of the network and the associated bandwidth

Bandwidth is determined based on:

- Image Resolution
- Number of caméras
- Number of images per second
- Compression (Motion JPEG, MPEG-4, H.264)
- Complexity of the image
- Codec algorithm of the caméra



Network Transport and Bandwidth (2/2)

Bandwidth is made out of different streams:

- Live video stream
- Recorded video stream

Basic bandwidth requirement can be calculated using the following formula::

⇒ Image Resolution (average pour MPEG 4) x Nbre of image/sec x Nbre of caméras

Network optimization is achieved by our solutions using the protocole IGMP V2 Multicast, which initiates transmission only when the video is active. This approach allows for the video transmission to take place without saturating the network



Storage Requirements of our Video Protection Systems (1/2)

The rise of the IP video protection systems has exponentially increased the need of networked storage. This has raised challenges in terms of the type of storage these types of files should be stored and the amount the space it requires and the retention periods.

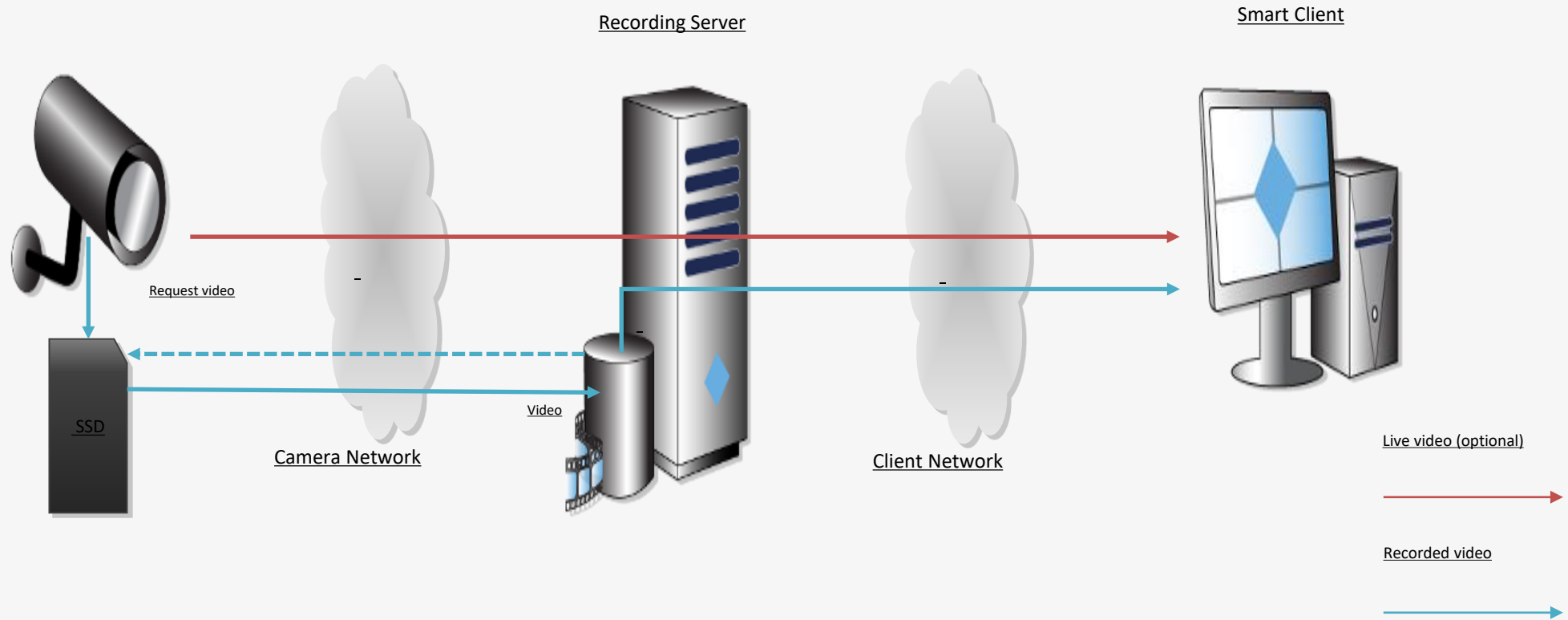
The video streams are directed in real time onto servers that guarantee the recordings and handles any alarms or events.

« Events » covers access control, intrusion detection, video surveillance. Specialised application run on the servers to manage the storage aspect of the solutions.

As a standard the video protection solution record on the basis of 24x7x365 in Full HD (1920x1080) de 2MP, de 25 images per seconde.



Storage Requirements of our Video Protection Systems (2/2)





Storage Sizing (1/2)

The éléments to consider in order to size the storage need of a particular project are the following:

- Number of caméras
- Number of daily recording hours
- Data retention period
- Event driven recording (movement detection ...) or continuous
- Images frequency
- Compression Format
- Image Quality

The type of video compression used is a major factor in terms of amount of storage requirements.

H.264 is by far the most efficient compression format currently available as it allows a data reduction of up to 80 % for digital content compared to JPEG and 50% compared to MPEG-4 (Part 2), without affecting image quality.

Keeping the format in mind video streams cannot be calculated the same way for MJPEG, or MPEG4.

For JPEG, image size is set whereas for MPEG4 image size depends on the motion.



Storage Sizing (2/2)

Sizing of the video recording is performed using the following:

- For MPEG 4 compression :

- ⇒ Streams approx. (en Mbit/s) / 8 (bits in one Byte) = MB/seconde

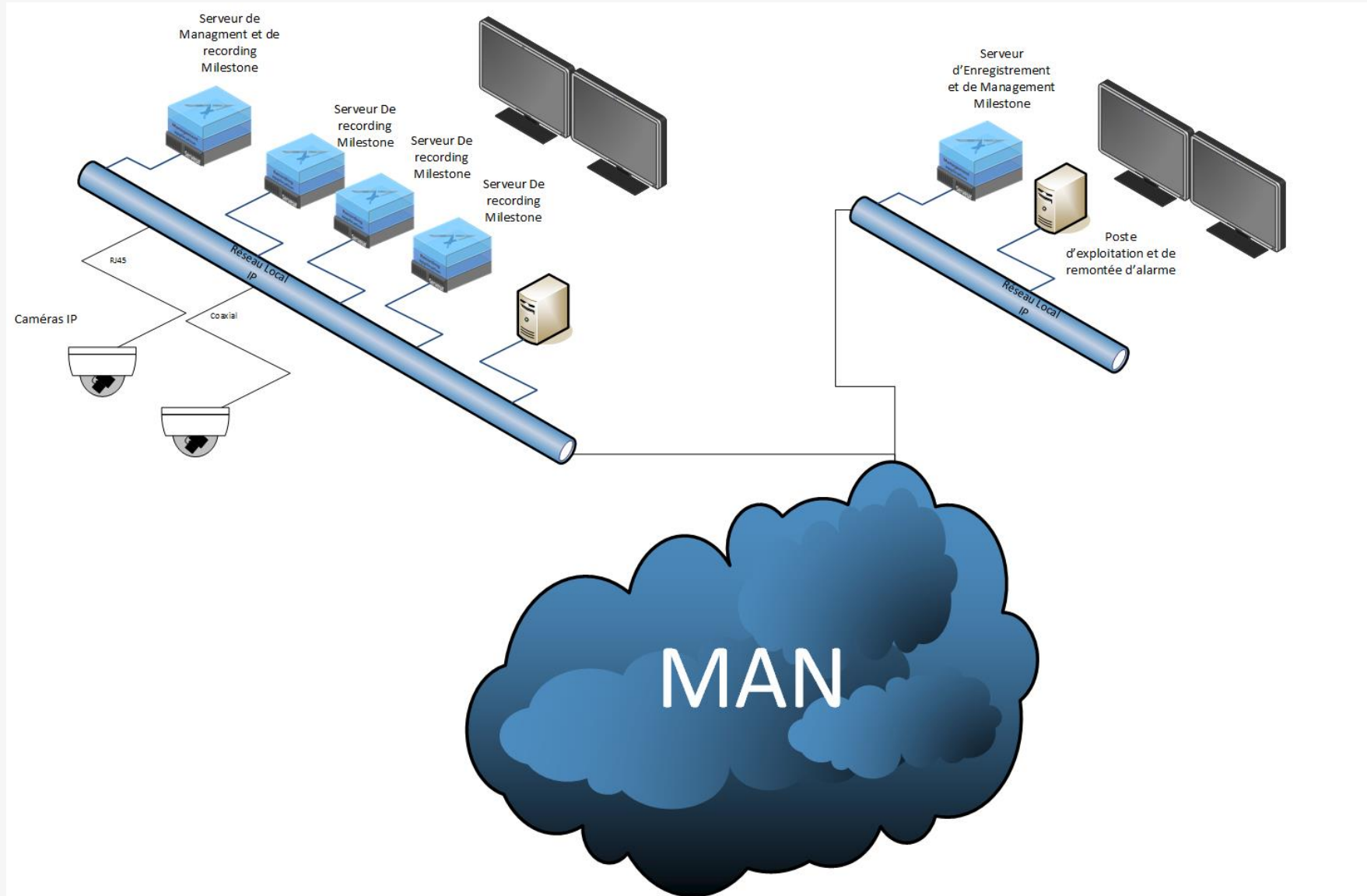
- ⇒ MB/s x 3600 sec per hour = Mo/hour

- ⇒ MB/h x Nbre hours par jour / 1024 = GB/day

- ⇒ GB/jour x Nbre of days of recording x Nbre de caméra = Besoin de stockage en GB (/ 1024 pour TB)

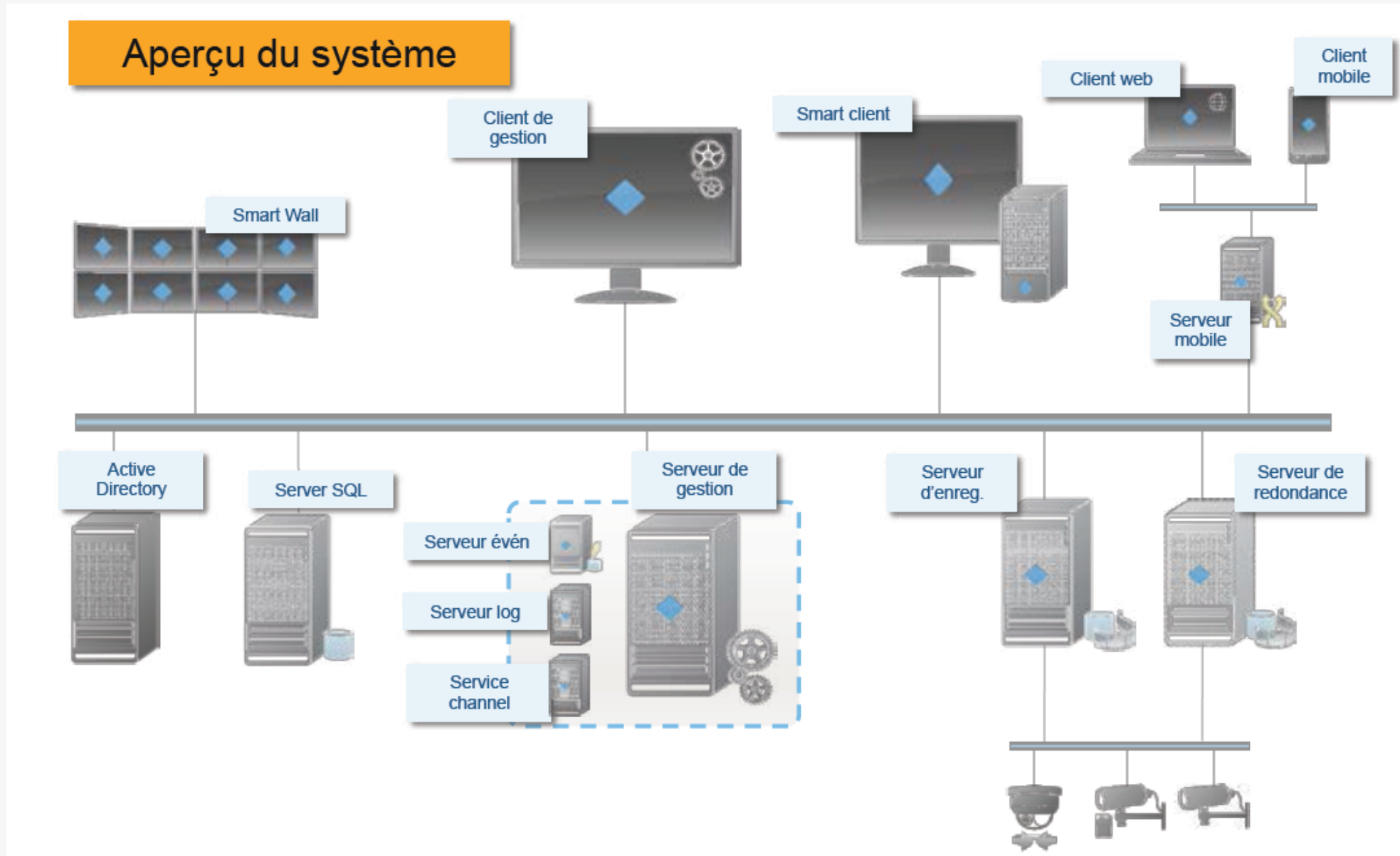


Standard Architecture





Xprotect Solution Overview





STORAGE



Our approach to the Storage Market

Solution provider rather than Hardware Vendor which is why we have an all-inclusive approach in terms of Software Licences and associated services.

aData Tribe offers two options for on-prem storage

- Proprietary storage (Assembled in Ireland)
- All Flash array from industry leading vendors

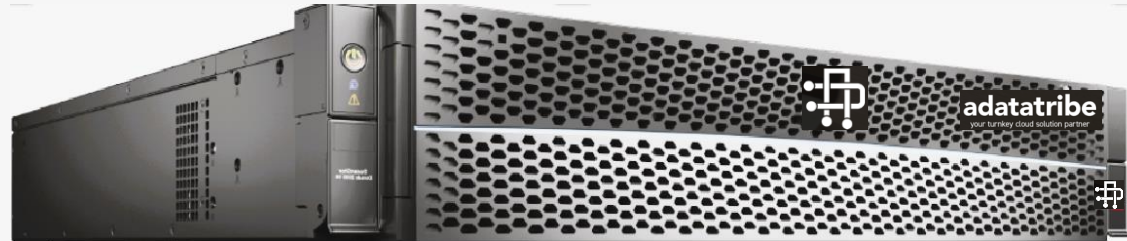
aData Tribe only works with leaders in Gartner Magic Quadrant for Primary Storage

Where Public Cloud is the preferred option aData Tribe can manage your entire AWS, Azure or Google Cloud tenancy.



ADT 2K, 3K, 5K

- A Data Tribe Proprietary Storage offering
- Fully end-to-end NVMe
- Data-In-Place migration capable, both in family as well as upgrade to next family
- 2U Rack space
- Entry-level array with full suite of Enterprise features





ADT 3000 All-Flash Storage Highlights

Ever Fast



Industry-leading performance and latency

30% higher NAS performance than industry benchmark

Ever Solid



SmartMatrix fully interconnected architecture for always-on applications

Provides active-active solution for SAN and NAS

Intelligent



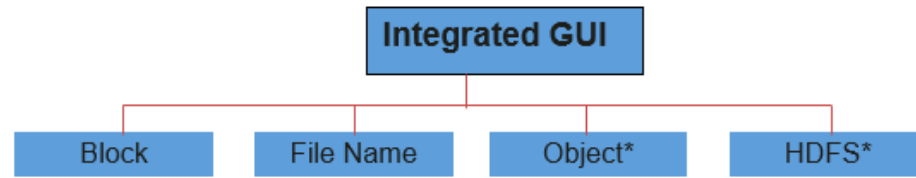
Intelligent full-lifecycle management

Intelligent O&M
Edge-cloud collaboration





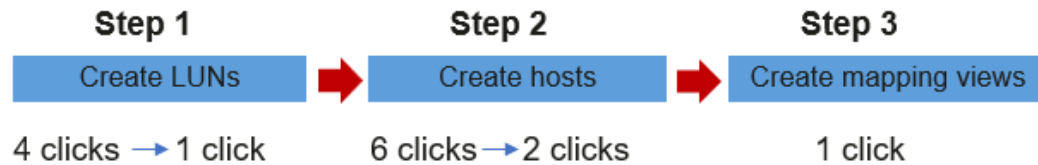
DeviceManager: Easy-to-Use, Intelligent Device Management



Simplified GUI

Unified portal for multiple services:

>50% higher management efficiency

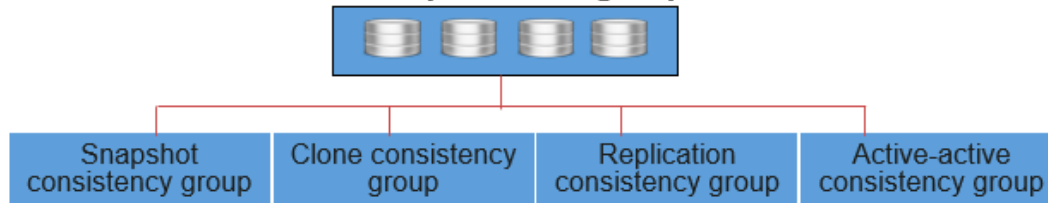


Simplified deployment

I/Os provisioning in three steps:

64% faster deployment

Create protection groups



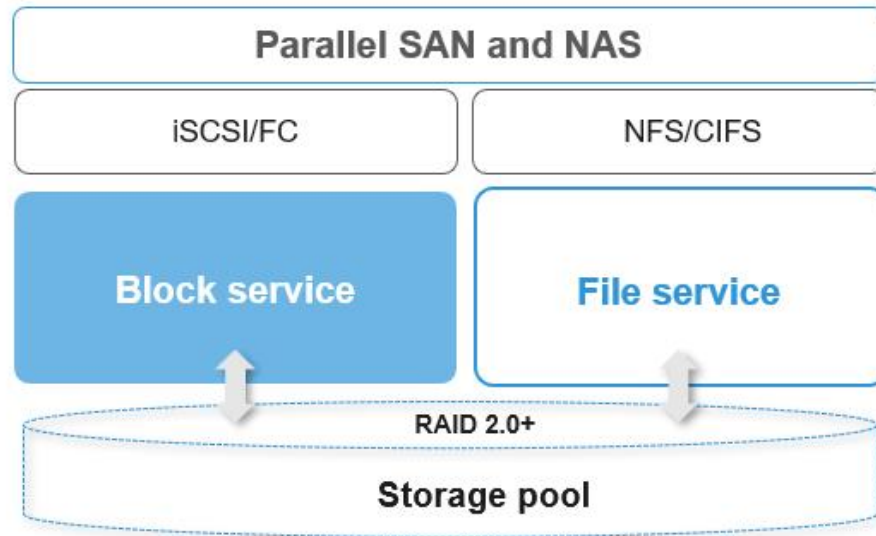
Simplified protection

Protection group management from the app perspective:

75% fewer operations



Converged SAN and NAS: One System for Multiple Workloads



Gateway-free

All-in-one block and file storage and NAS gateway-free design
20% lower procurement costs.

Parallel architecture

Parallel SAN and NAS provide different workloads with optimal access paths for the highest access performance.

Healthcare
HIS/PACS



Finance
Cheque imaging

Government
E-Gov./OA systems





Solution Reliability

— FlashEver Ensures Zero Data Migration for Always-On Services

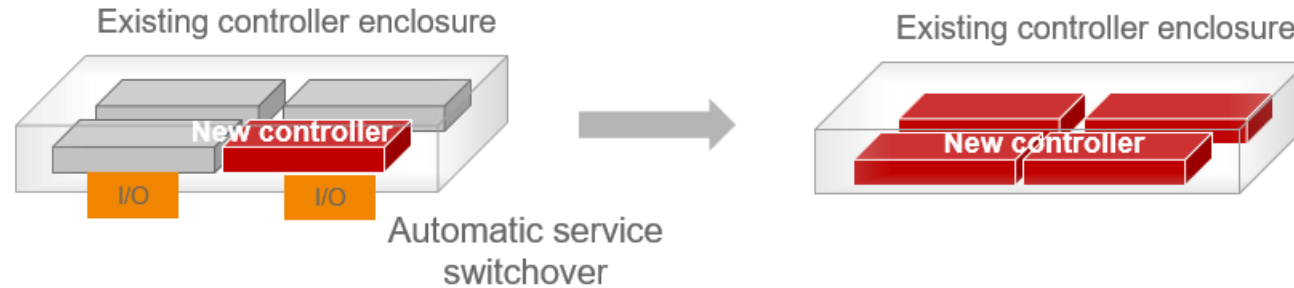
New upgrade model

Individual replacement of controllers or drive enclosures **instead of** replacing the entire system

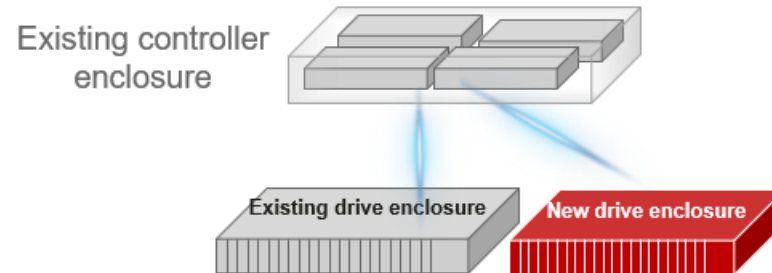
Zero data migration and **zero** service disruption

Free access to next-gen hardware for a **20%** performance increase

Upgrade the storage controller to the next gen



Upgrade the drive enclosure to the next gen





Ever Solid Applications with 5 Reliability Layers

99.9999%
system-level reliability

99.999999%
solution-level reliability



Cloud backup

- Effortless cloud backup



Solution

- Active-active solution for SAN and NAS ensures always-on services
- FlashEver without data migration



System

- **Comprehensive** enterprise-class features
- Tolerance for simultaneous failures of 3 disks
- Reconstruction of 1 TB data in **15 minutes**
- **Enclosure-level redundancy** tolerates the enclosure failure



Architecture

- High Redundancy with **SmartMatrix** fully-interconnected architecture
- E2E active-active design



SSD

- Global wear leveling
- **global anti-wear leveling algorithm** – important as solution ages



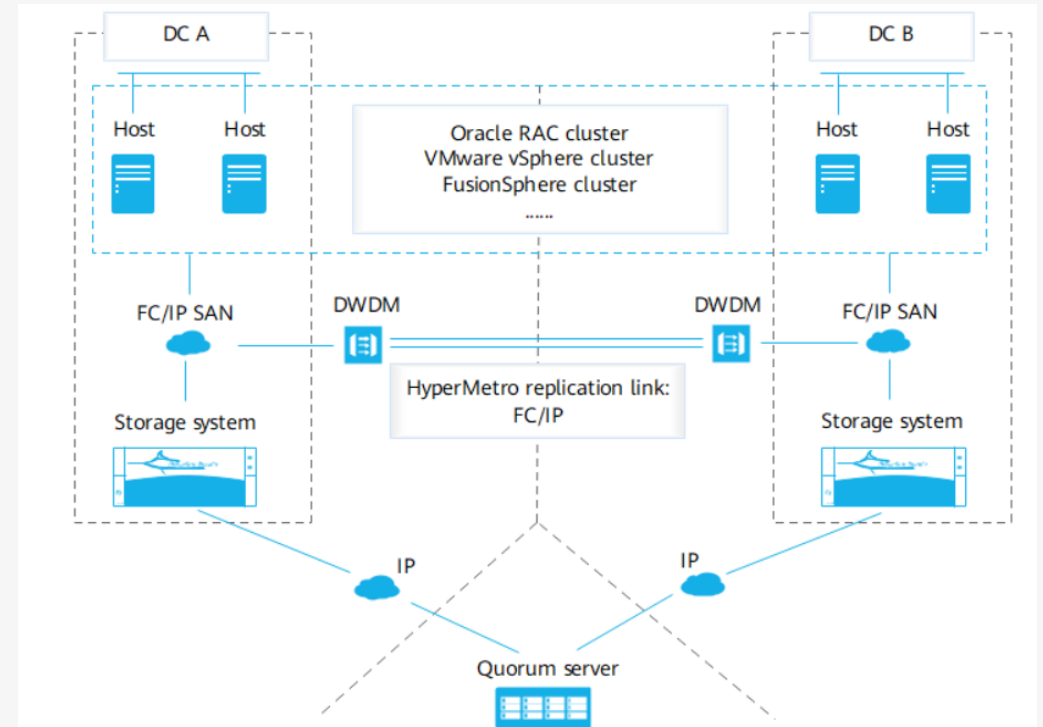
ADT 2K, 3K, 5K Solution Highlights

- Ultra-high I/O Performance enabled by end-to-end NVMe architecture
- Ultra-low latency making it suitable for enterprise grade apps as well as use cases such as VDI
- 99.99999% uptime (7 nines) at solution level
- Active-Active clustering for both SAN and NAS workloads
- 3.3:1 data reduction for SAN workloads, 2:1 for NAS
- Intelligent algorithm reducing power consumption



HyperMetro

- In the event of a storage system or DC failure, services are switched over to the other DC at zero RTO and RPO, ensuring service continuity without any data loss.
- Both DCs provide services simultaneously, fully utilizing DR resources.
- The active-active solution ensures 24/7 service continuity. The gateway-free design reduces potential fault points, further enhancing system reliability.
- HyperMetro can work with HyperReplication to form a geo-redundant layout comprising three DCs.





EVERGREEN BUSINESS MODEL

- DELIVERS A SUBSCRIPTION TO INNOVATION





UNMATCHED SIMPLICITY



ONE BOX



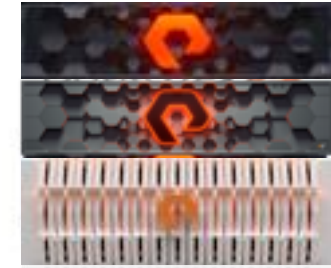
30-MINUTE
INSTALL



STANDARD
CABLES



NO MANUAL
REQUIRED



ALL ARRAY SOFTWARE
INCLUDED



EVERYTHING
ENCRYPTED



NO TIERING OR
PERFORMANCE TUNING



API-BASED EVERYTHING
FOR AUTOMATION

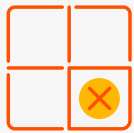


AI-DRIVEN CLOUD SUPPORT,
MANAGEMENT & ANALYTICS

Enterprise Data Services Included with FlashArray

Store, protect, access, and manage your data efficiently and securely

Purity *FA*



Data Reduction



ActiveCluster Replication



Ransomware Remediation



Always-on Encryption



Async Replication



Quality of Service



High Availability



File Services



Non-Disruptive Upgrade



Efficient, Highly Available Data Storage

Be confident that *all* your enterprise data is stored using the least possible capacity

Unified block and file data services

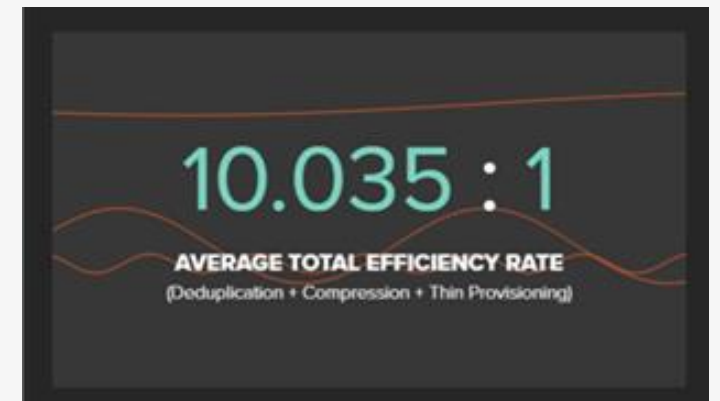
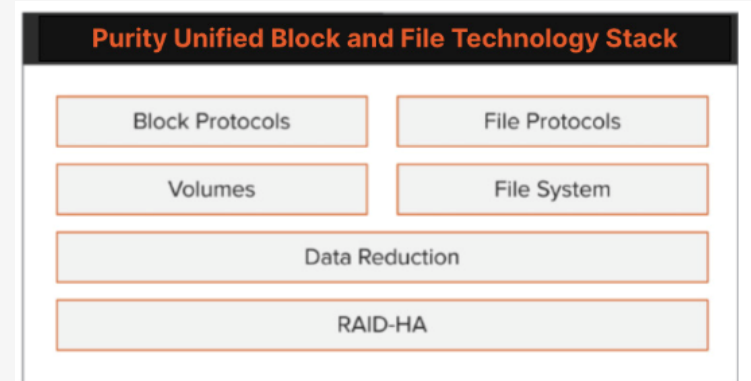
- Eliminate storage silos by data type for efficiency and flexibility
- Built directly on Pure's core data reduction and availability tech

Data reduction for maximum storage efficiency

- Spend less money with more efficient storage.
- Pure averages an industry-leading 5:1 data reduction with a total efficiency of 10:1 when thin provisioning is included.

High availability for always-on operations

- Pure protects against concurrent dual-drive failures and initiates re-builds automatically within minutes
- Performance variability is treated as a failure and uses parity to work around bottlenecks to deliver consistent latency.





What do you get with a Data Tribe Storage Solutions?

- Data in place migration capability covering 3 generations – up to 10 years
- Active-Active for SAN/NAS
- Synchronous Replication for SAN/NAS
- Sub millisecond latency
- Metro Cluster
- Very Competitive Pricing

Thank You